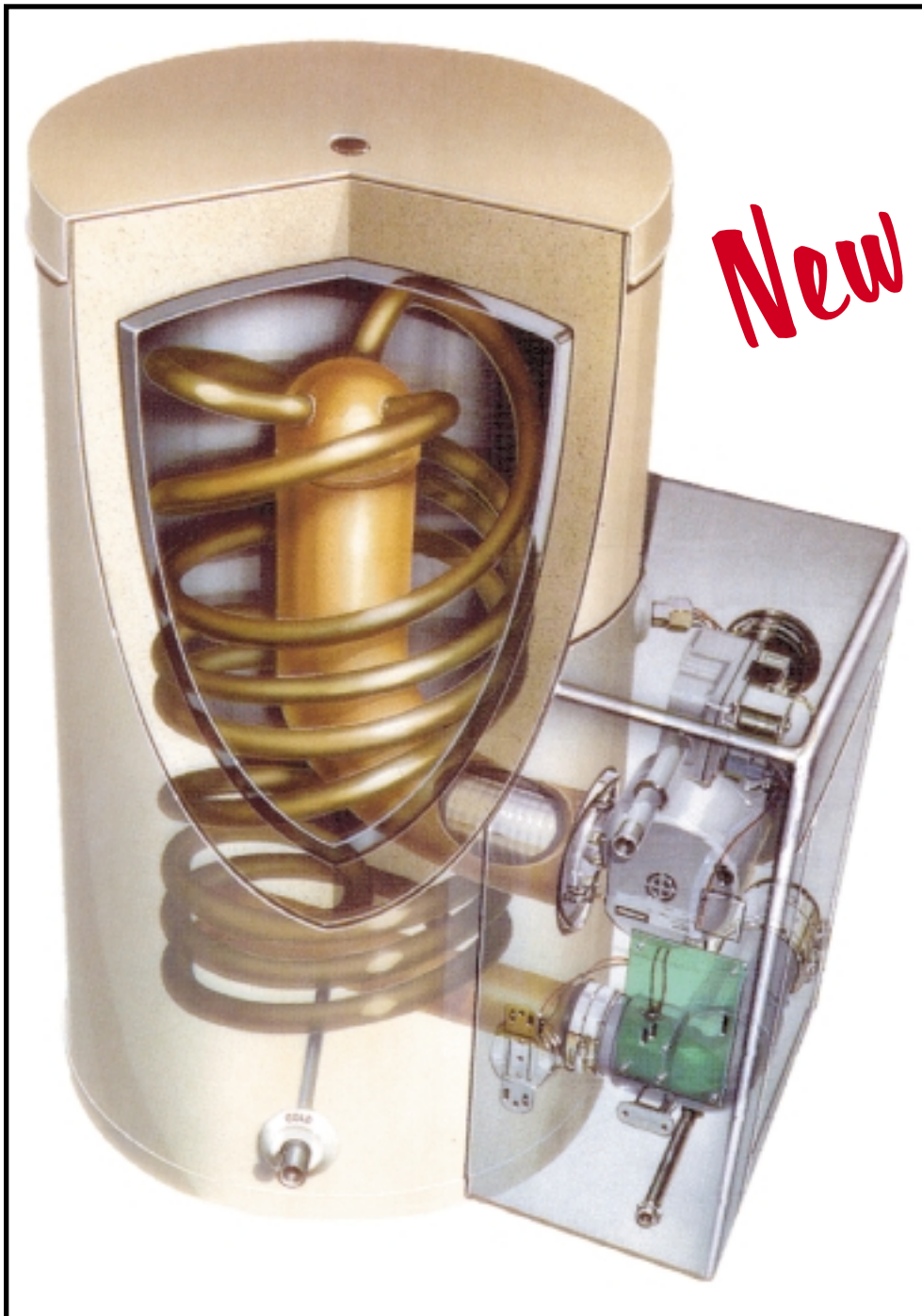


# SUPER-EFFICIENCY



High Efficiency

# 95%

Can Save  
Laundry Owners  
Thousands of  
Dollars on Fuel  
Annually.

- No Boiler Room Required
- Zero Clearance
- Sealed Combustion
- Side Wall Venting
- No Chimney Construction
- No Large Fresh Air Openings



**NATIONAL COMBUSTION CO., INC.**

104-11 180th ST., JAMAICA, NY 11433 TEL (718) 291-8400 • FAX (718) 291-6870

[www.nationalcombustion.com](http://www.nationalcombustion.com)

[natcosupport@erols.com](mailto:natcosupport@erols.com)

# FEATURES

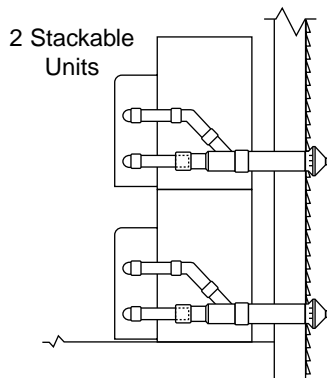
- Efficiency of 95% dramatically reduces operating costs.
- Zero clearance to any combustable surface may be installed in any closet.
- 316L Stainless Steel Storage tank construction.
- Corrosion resistance, high efficiency 90/10 Cupro-nickel heat exchanger.
- Sealed combustion: No chimney or large fresh air opening required. Direct vent with plastic pipe.
- Easy to install, operate, and service.
- Multiple heater installation for increased capacity.
- 45 gallon units may be stacked to save space.
- Low NOx.
- Less Than 1/2° F per hour standby loss (R17).
- Self diagnostic electronic control featuring digital readout of water temperature set point and differential.
- Temperature range from 70° to 160°F.
- Water connections: 1-1/2"

## Specifications on Size

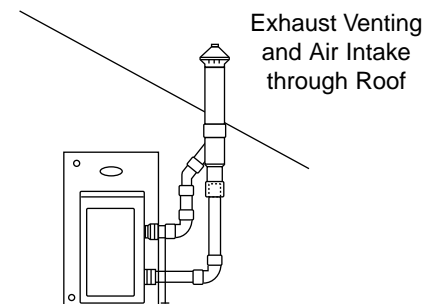
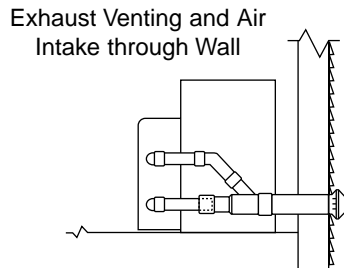
| Package Number           | BTU Input | Storage Gallons | Height Inches | Width Inches                        | Depth Inches | Vent Inches | Weight Lbs. |
|--------------------------|-----------|-----------------|---------------|-------------------------------------|--------------|-------------|-------------|
| SE-199-45                | 199,000   | 45              | 42            | 23.5                                | 32           | 3"          | 175         |
| SE-199-80                | 199,000   | 80              | 72            | 23.5                                | 32           | 3"          | 235         |
| SE-199-119               | 199,000   | 119             | 73            | 27                                  | 36           | 3"          | 405         |
| SE2-398-160<br>(2 Units) | 398,000   | 160             | 72            | 2 of the Above<br>SE-199-80         |              | 2 X 3"      | 470         |
| SE2-398-90<br>(2 Units)  | 398,000   | 90              | 84            | 2 of the Above<br>SE-199-45 Stacked |              | 2 X 3"      | 350         |

## Recovery Ratings

| Package Number           |                          | TEMPERATURE RISE |      |      |      |     |      |      |     |
|--------------------------|--------------------------|------------------|------|------|------|-----|------|------|-----|
|                          |                          | 40               | 60   | 70   | 80   | 90  | 100  | 120  | 140 |
| SE-199-45                | GPM                      | 9.45             | 6.3  | 5.4  | 4.73 | 4.2 | 3.78 | 3.15 | 2.7 |
|                          | GPH                      | 567              | 378  | 324  | 284  | 252 | 227  | 189  | 162 |
|                          | Gal. 1 <sup>st</sup> Hr. | 612              | 423  | 369  | 329  | 297 | 272  | 234  | 207 |
| SE-199-80                | GPM                      | 9.45             | 6.3  | 5.4  | 4.73 | 4.2 | 3.78 | 3.15 | 2.7 |
|                          | GPH                      | 567              | 378  | 324  | 284  | 252 | 227  | 189  | 162 |
|                          | Gal. 1 <sup>st</sup> Hr. | 647              | 458  | 404  | 364  | 332 | 307  | 269  | 242 |
| SE-199-119               | GPM                      | 9.45             | 6.3  | 5.4  | 4.73 | 4.2 | 3.78 | 3.15 | 2.7 |
|                          | GPH                      | 567              | 378  | 324  | 284  | 252 | 227  | 189  | 162 |
|                          | Gal. 1 <sup>st</sup> Hr. | 686              | 497  | 443  | 403  | 371 | 346  | 308  | 281 |
| SE2-398-160<br>(2 Units) | GPM                      | 18.9             | 12.6 | 10.8 | 9.46 | 8.4 | 7.56 | 6.3  | 5.4 |
|                          | GPH                      | 1134             | 756  | 648  | 568  | 504 | 454  | 378  | 324 |
|                          | Gal. 1 <sup>st</sup> Hr. | 1294             | 916  | 808  | 728  | 664 | 614  | 538  | 484 |
| SE2-398-90<br>(2 Units)  | GPM                      | 18.9             | 12.6 | 10.8 | 9.46 | 8.4 | 7.56 | 6.3  | 5.4 |
|                          | GPH                      | 1134             | 756  | 648  | 568  | 504 | 454  | 378  | 324 |
|                          | Gal. 1 <sup>st</sup> Hr. | 1224             | 846  | 738  | 658  | 594 | 544  | 468  | 414 |



Venting using optional concentric Venting Kit



**NATIONAL COMBUSTION CO., INC.**  
**104-11 180th ST., JAMAICA, NY 11433**  
[www.nationalcombustion.com](http://www.nationalcombustion.com)  
[www.thomasregister.com/natco](http://www.thomasregister.com/natco)



TEL (718) 291-8400 • FAX (718) 291-6870